



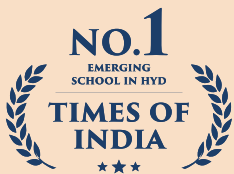
MANCHESTER GLOBAL SCHOOL

Education and Knowledge
with Wisdom



**ROOTED IN INDIAN VALUES.
GROOMED FOR GLOBAL IMPACT.**

— Welcome to the Manchester method! —



A Day and Residential School

www.manchester.global | +91 72079 75566

Chairman's Message



Dr Kondal Reddy Kandadi MBE

BSc PGDBM MSc PhD

Founder Chairman

Awarded an Honorary MBE in June 2021 (The Most Excellent Order of the British Empire) by Her Majesty The Queen in recognition of his services to Education, Public Health and Industry in the United Kingdom (UK).

We are delighted to welcome you to the Manchester Global School (MGS Hyderabad, India), a world-class academy striving to create leaders and entrepreneurs for the enduring benefit of industry and society.

At MGS, our vision is to impart knowledge with wisdom through excellence in education and holistic development of our students so that they are enabled to fulfil their true potential and contribute to the world at large as leaders, guardians, and pioneers.

Manchester Global School is situated on a 20-acre greenfield site, providing a trendsetting educational environment that encompasses state-of-the-art learning infrastructure, sports facilities, cutting-edge technologies, and boarding options. Learners will also have access to a diverse range of classroom and laboratory facilities.

Our teachers, support staff and the leadership team are committed towards the success of our students. At MGS, we strive every day to achieve excellence in education with highest standards in design and delivery of curricula.

With an institutional culture of curiosity, collaboration and holistic development, students at our school will have the opportunity to grow together while exploring, learning, and laying foundations for their bright futures.

We look forward to seeing you on our beautiful campus!

Principals' Messages



Mr Robert Edward Davies

BA, PGCE

Principal - IB

At Manchester Global School, we bring together the strengths of the IB and CBSE curricula, rooted in strong values and a global outlook. I am honoured to join a school that places learners at the heart of innovation, inquiry, and purpose-driven education.

With extensive experience in IB leadership across international contexts, I look forward to working alongside dedicated educators to create meaningful learning experiences that prepare students for a rapidly changing world.

Our world-class campus, experienced faculty, and accessible residential facilities near Hyderabad International Airport offer an exceptional environment for growth. Through academics, leadership programmes, sports, and service, we empower students to thrive as confident, compassionate, and globally minded individuals.

A handwritten signature in black ink, appearing to read 'Rob Davies'.



Ms Ruchi Rawat

BA BEd MA MPhil

Principal - CBSE

I am delighted to share Manchester Global School's commitment to empowering young minds for success. Our holistic curriculum focuses on core subjects and essential life skills like Leadership, Communication, and Entrepreneurship. Our 20-acre campus offers top-notch facilities, including robotics labs, arts and design areas, and sports facilities. Our dedicated faculty ensures each student's potential is cultivated, creating a safe and supportive educational atmosphere.

Join us on a journey of knowledge and achievement at our magnificent campus! Together, let us inspire brilliance and shape a future of endless possibilities for our students. We eagerly anticipate your presence and active participation in this transformative learning experience.

A handwritten signature in black ink, appearing to read 'Ruchi Rawat'.



About Manchester Global School

An international school providing a world-class educational experience starting from nursery, combining core Indian values and global best practices.

Our Motto

"Vidyā Jñānam Prajñā"
(Education and Knowledge with Wisdom)

Vision

To be a world-class institution of excellence through the creation and dissemination of knowledge by educators with a core commitment to learning and the holistic growth of students.

Mission

Growing leaders for society and industry.

We achieve this by imparting a holistic education that develops value-based pioneers in an environment of research, innovation, and entrepreneurship through state-of-the-art learning infrastructure and committed educators.



The Logo

At the heart of Manchester Global School's brand is a symbol rich in meaning - the Sun, Elephant, Chakra, Swan, and Lotus. This emblem reflects our motto, "**Vidyā Jñānam Prajña,**" encapsulating our mission to impart '**Education and Knowledge with Wisdom.**'

The Sun embodies enlightenment through holistic learning, the Elephant symbolises mental strength for purposeful lives, and the Chakra represents moral values. The Swan encompasses balance and graciousness, while the Lotus signifies honesty, purity, and enlightenment. Our logo illustrates our commitment to nurturing students with insight, empowering them to realise their potential and embody universal virtues.



**MANCHESTER
GLOBAL SCHOOL**

Education and Knowledge
with Wisdom

Why the Name Manchester?

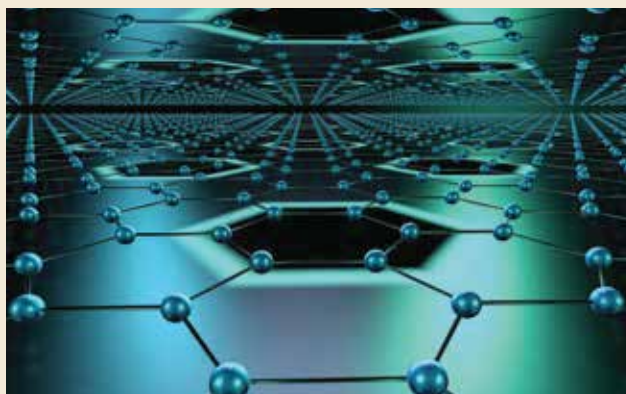
Manchester, the birthplace of The Industrial Revolution, captures the founding principles of Manchester Global School, with its dynamic blend of history, culture, diversity, innovation, and entrepreneurship. This global city reinvented itself over the centuries and remained at the forefront of education, industry, arts, sports, research, science and technology. Its rich industrial heritage shaped the modern world with a profound impact on the progress of mankind. The motto, vision and mission of Manchester Global School draw inspiration from these core elements of the City of Manchester. Our school lives and breathes the essence of these elements to achieve its fundamental purpose: to grow pioneers, leaders, and entrepreneurs for the enduring benefit of society and industry.

The city's iconic red-brick University, mills, warehouses, football clubs and media hubs serve as reminders of its rich past and vital present. It has risen like a phoenix from many challenges over the decades. Each time, it has emerged stronger, embodying the true spirit of the city. Manchester Global School's journey to be a world-class institution of excellence reflects such great adaptability and evolution.



University of Manchester

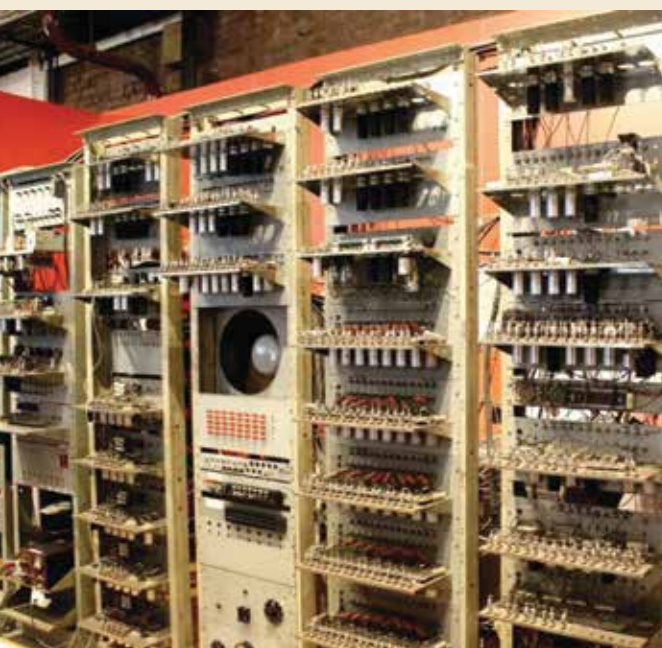
Manchester Global School draws several valuable teachings from the City of Manchester, across various domains. The city's contribution to science and technology is reflected through the 25 Nobel Prizes in Physics, Chemistry, Medicine, and Economic Sciences, won by the faculty and alumni of the University of Manchester.



Molecular structure of Graphene

The boundless range of these advancements is phenomenal; from the discovery of the Electron to creation of Graphene; production of the world's first stored-programme computer to the creation of an Artificial Intelligence system; and development of concepts in welfare economics to the pivotal role in the cooperative movement.

The city's Arts scene, its great football clubs and birth of world's renowned brands depict its diverse prowess; Reebok, Vimto, The Co-op, Manchester United, McVities, Regatta, PG Tips, Umbro, and Rolls-Royce.



Stored-programme computer

The essence of the Manchester Global School connects with the nature and contrasts of the city of Manchester - industrious yet innovative and local yet global. Our school is an institution where tradition and progress coexist, creating a unique learning and growing experience.

Our name, Manchester Global School, reflects what we stand for: continual investment in world-class education, encouraging innovation and adaptability, promoting cultural diversity and inclusivity, development of community life-force and social responsibility, achieving excellence in arts and sports with team spirit, embracing technological advancement, and fostering a unique identity and heritage.

Why Choose Manchester Global School?



Global perspective infused with core Indian values.



Exceptionally qualified educators chosen from around the world.



Experiential learning brings subjects to life.



Each student's distinct talents will be nurtured.



State-of-the-art facilities creating an enriching learning environment.



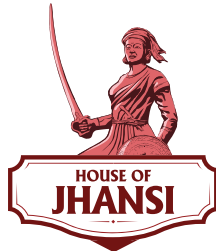
Innovative curriculum nurturing holistic development.

Core Values



Houses at Manchester Global School

For Girls



HOUSE OF JHANSI

Named after Rani Lakshmibai of Jhansi (1828 -1858)



HOUSE OF CURIE

Named after Maria Salomea Skłodowska Curie - Marie Curie (1867 - 1934)



HOUSE OF RUDRA

Named after Rudra Deva Maharaja - Rani Rudrama Devi (c.1223 - 1289)



HOUSE OF BENZ

Named after Bertha Benz (1849 - 1944)

For Boys



HOUSE OF ASHOKA

Named after Ashoka The Great (304 BCE - 232 BCE)



HOUSE OF CHANDRA

Named after Sir Chandrasekhara Venkata Raman FRS (1888 - 1970)



HOUSE OF EDISON

Named after Thomas Alva Edison (1847 - 1931)



HOUSE OF CHANAKYA

Named after Chanakya - Kautilya - Vishnu Gupta (4th Century BCE)



Campus

Spread across 20 acres in Hyderabad, our campus expertly combines modernism and tranquillity to provide a peaceful haven for learning. It has a colossal built-up area of almost 6 lakh square feet which is carefully planned to offer a rich environment that promotes teamwork, curiosity, and boundless progress. Our infrastructure creates the ideal environment for a remarkable educational experience.

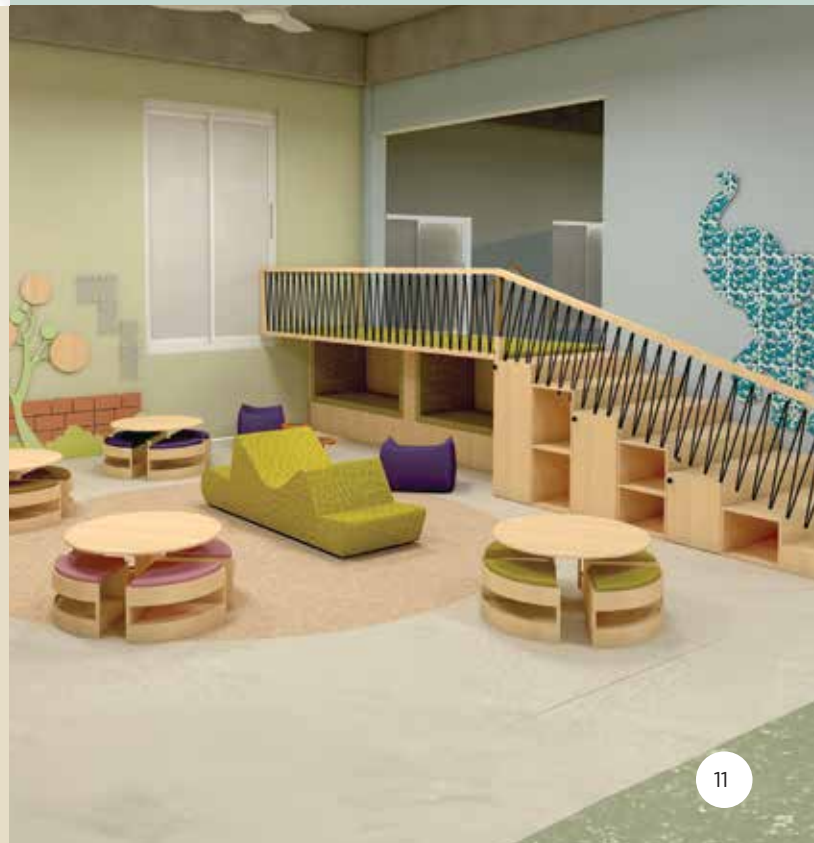


State-of-the-Art Infrastructure



Modern interactive classrooms designed to promote active involvement, collaborative learning, and critical thinking.

Creative and collaborative learning spaces for early years students to inspire innovation, encourage teamwork, and stimulate independent exploration.



Cutting-edge science laboratories that spark a desire for inquiry, invention, and problem-solving.



Comfortable boarding facilities meeting global standards, with separate hostels for boys and girls.



A convention centre spanning over 70,000 square feet, housing a spacious dining area, an expansive library, and a versatile auditorium. The centre also features a VR studio, offering immersive virtual experiences that enhance learning. There is a gaming lab, providing interactive educational games that encourage analytical and imaginative thinking among students. It also boasts a sky observatory equipped with telescopes, making it a hub for both academic and astronomical exploration.





An open-air amphitheatre for cultural events, drama performances, and community gatherings.



An art and craft studio, a space where budding artists and artisans are nurtured through diverse artistic expressions.

An innovation studio for students to explore new-age technologies like robotics, promoting active learning.





A design studio for transforming concepts into fully realised products through meticulous planning and creative ingenuity.

A culinary lab, where students explore the art and science of cooking, honing their culinary skills and experimenting with flavours to create delectable masterpieces.



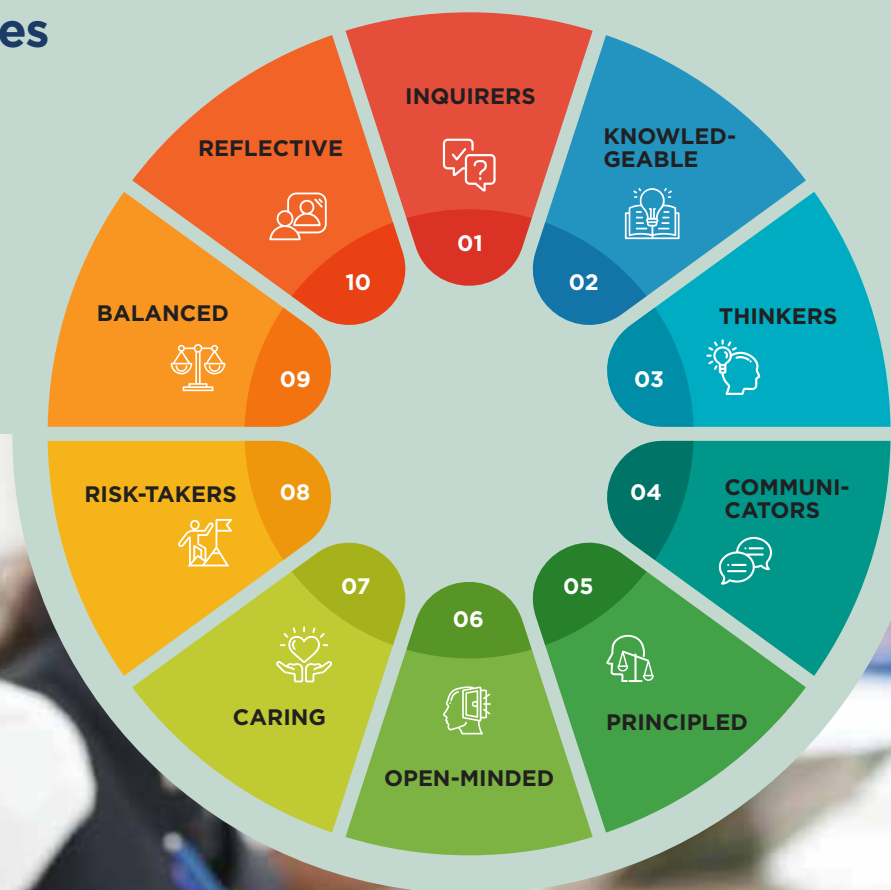
We take pride in being the first school in South India to have our very own Sky Observatory with telescopes, enabling students to embark on astronomical adventures.

IB Curriculum

At Manchester Global School, our commitment lies in providing a dynamic and internationally integrated curriculum designed to equip students for success in an ever-evolving world. With meticulous care, we shape our curriculum to offer students a truly enriching educational experience.

The International Baccalaureate (IB) is a global education program known for its holistic approach, focusing on academics, critical thinking, and cultural understanding. It spans various age groups, including the Primary Years Programme (PYP), Middle Years Programme (MYP), and Diploma Programme (DP). The IB encourages students to think deeply, conduct research, and often learn multiple languages. It culminates in the challenging DP exams, and success results in the globally recognised IB Diploma, opening doors to prestigious universities and fostering a well-rounded global perspective.

IB Learner Attributes



CBSE Curriculum

Manchester Global School (MGS Hyderabad) endeavors to cultivate a nurturing learning environment where students feel welcomed, safe, and intellectually stimulated while delivering a balanced education that integrates local and global perspectives. The CBSE curriculum delivery at MGS breathes and lives the essence of our institution's fundamental purpose: to grow pioneers, leaders, and entrepreneurs for the enduring benefit of society and industry. MGS aligned itself with the core goals of the National Educational Policy (NEP 2020) to foster a more inclusive, innovative, and holistic educational environment.

Our integrated and interdisciplinary approach to student learning promotes critical thinking, creativity, real-world problem-solving, collaboration and entrepreneurial spirit. We emphasize vocational training and life skills development within the CBSE curriculum. Our state-of-the-art sports infrastructure provides a natural environment for the overall development of the students. MGS also incorporates multiple languages in the curriculum to ensure that students are proficient in their mother tongue, Hindi, and English. We encourage experiential Learning by focusing on developing a diverse range of skills through projects, internships, and field trips. Our formative and competency-based assessments help students in shifting from memory based rote learning to skill acquisition and knowledge application.

To deliver world-class education at MGS, our teachers undergo rigorous selection process and training in innovative pedagogies. Our state-of-the-art technological infrastructure including digital classrooms, laboratories, learning devices, online resources, and educational apps significantly enhance student learning. Our blended learning models effectively combine online and offline learning to provide a flexible and comprehensive educational environment.

Our engagement programs with key stakeholders, especially with parents and teachers, are integral to our institutional philosophy. We regularly organize workshops and sessions for parents and the community to promote awareness regarding student learning, evaluations and continuous improvement plans. We have also established mentorship systems to foster collaborative learning among educators. In addition to world-class education, Manchester Global School has a core commitment towards the mental health and well-being of students. Provision of psychological support and counseling services, when and where needed, are integral to promoting the overall well-being of our students.

Dream. Dash. Dominate.

Speed. Spirit. Unstoppable energy. The interschool race event - Dream Dash - organised by Dream Sports Foundation (Dream 11), turned the Manchester Global School campus into a thrilling arena of pure adrenaline, as young athletes from top schools across Hyderabad came together for a day of heart-pounding sprints and unforgettable moments.



For MGS, Dream Dash was more than a race. It was a showcase of what we believe in: teamwork, grit, and the joy of striving for greatness

Our National Champion

Manchester Global School celebrates Hasitha Reddy Patelu, MYP 4, for winning the U-17 ISSO National Chess Championship. Her achievement highlights focus, endurance, and intentness, reflecting MGS's commitment to nurturing strategic thinking, discipline, and excellence while inspiring peers to pursue their passions.



LIFE AT MANCHESTER



GLOBAL SCHOOL

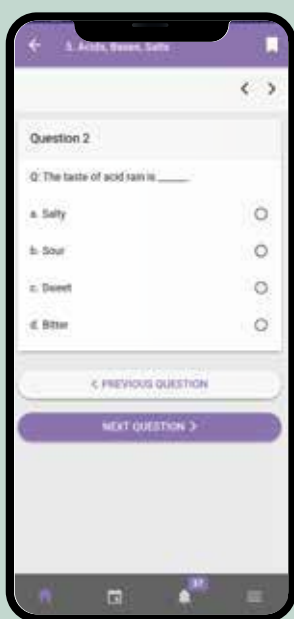


MGS Way: Holistic Development of Your Child

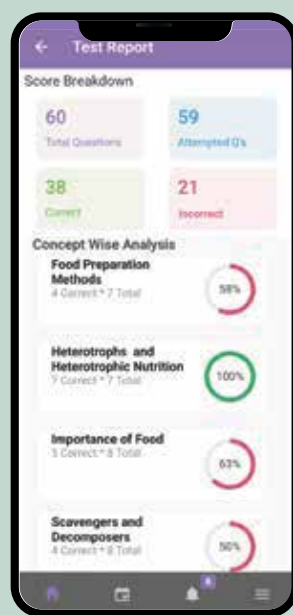


Academic Diagnostics and Personalised Learning Support

Our unique Academic Diagnostics Tests, in core subjects such as Mathematics and Science, focus on individualised continuous learning. They assess each student's knowledge, and identify learning gaps through Gap Analysis reports. Our teachers will then fix those specific learning gaps of each student throughout the academic year.



Algorithm based Academic Diagnostics Tests across subjects



Get Gap Analysis reports at the chapter and concept level



Get personalised support through subject clinics

Research Centres

Manchester Global School is going to be home to two exceptional research centres that drive innovation in education.

iCERi - International Centre for Educational Research and Innovation

iCERi is a research hub investigating innovative pedagogies, teacher training methods, and the integration of virtual technologies to achieve educational excellence. Through collaborations with renowned institutions worldwide, iCERi will offer comprehensive training programs and will remain at the forefront of educational innovation.



VYASSA - Vedic Yoga and Sanskrit Studies Academy

VYASSA is a centre devoted to learning the ancient wisdom of Vedic knowledge, transformative principles of Yoga, and Sanskrit language and literature. VYASSA will enable individuals to lead balanced lives by examining the theoretical underpinnings and practical applications of yoga, while also creating a profound respect for Sanskrit's cultural relevance.



A Home like Boarding Experience

Every child will experience a secure and nurturing boarding environment at Manchester Global School, where we will prioritise the well-being and growth of our students. We will foster a sense of belonging, camaraderie, and personal growth, creating a home away from home that promotes academic achievements, character development, and independence.

Our separate hostels for boys and girls will provide a comfortable and homely atmosphere for up to 600 students, with spacious air-conditioned rooms designed for their comfort. With dedicated floor in-charges/mentors ensuring round-the-clock supervision, our boarding facilities will offer constant support and supervision. You can choose from our 5-day and 7-day boarding options for flexibility, allowing your child to spend weekends at home.



We provide special facilities including modern flats for domestic and international faculty. Our dedicated staff building houses over 50 flats and will serve as centres for collaboration and cross-cultural exchange. The integration of international faculty will enrich the educational experience, while cosy and well-equipped staff quarters will enhance the teaching experience. We prioritise faculty well-being and comfort, creating an environment where they can thrive and inspire students.





A World of Activities Awaits Your Child

We are thrilled to present an exciting array of activities that will spark your child's passion and foster self-discovery.



Music Rooms

Open-air Amphitheatre: A mesmerising open-air stage, accommodating over 150 people, providing a platform for young talents to shine through theatrical performances.

Dance Space: A vibrant area dedicated to dance, where creativity finds its rhythm and students explore the joy of movement.

Music Rooms: Dedicated music rooms guided by expert educators, nurturing young musicians and allowing them to explore the world of melodies.

Sound Recording Studio: An advanced recording studio empowering budding artists to give voice to their creativity through the magic of sound.

Athletics: Our athletics programme promotes physical well-being and a healthy lifestyle, contributing to the holistic growth of our students.

Yoga Room: A tranquil space to nurture both body and mind, promoting inner balance and strength.



Recording Studio

We Offer Sporting Excellence, with World-Class Facilities

Sports are an essential component of our school's all-encompassing approach to education, not just a recreational activity. Sports encourage character development, collaboration, discipline, and a healthy lifestyle.

Our world-class athletic facilities will give students the chance to discover their athletic abilities and succeed in a variety of sports. They will gain useful abilities like resilience, sportsmanship, and leadership whether they are participating in inter-school competitions or informal games inside our school community.

They will be taught the values of commitment, practise, and fair play by experienced coaches. As they learn the joy of physical activity and the rush of attaining individual and group goals, we will encourage our students to embrace the virtues of teamwork and collaboration.

We will offer a well-rounded sports programme that fosters students' physical and mental well-being with a focus on both individual and team sports.

Outdoor Facilities

Football Field | Cricket Grounds
Tennis Courts | Archery Range | Rugby Pitch
Volleyball Courts | Skating Rink

Indoor Facilities

Full-size Basketball Court | Shooting Range
Swimming Pools | Rock Climbing Wall
Badminton Courts | Table Tennis Tables

Basketball Court





Swimming Pool



Badminton Courts



Shooting Range



Tennis Courts



Football Ground



Archery Range



Volleyball Courts



Cricket Ground

Safety and Security

At Manchester Global School, ensuring the safety and security of our students is our top priority. We will implement a comprehensive system that combines advanced technology with strict measures to create a secure learning environment. Using RFID technology is one of the major efforts that allows us to track our students in real time when they are on school grounds. This innovative approach provides parents and school staff with the assurance that children are within safe zones at all times.



Our plan is to improve the overall security infrastructure of the school by installing solar fencing around the premises. Our school buses will be geotagged and outfitted with GPS units, enabling parents and administrators to track the buses' whereabouts in real time, ensuring a timely and secure commute for our students. Regular security drills and workshops will be conducted to educate both students and staff about emergency procedures.

In addition to these, we will adhere to various other safety protocols which include robust fire safety measures, strict access controls, background checks for all staff members, and a zero-tolerance policy for bullying. We will conduct regular safety audits, collaborate closely with local law enforcement, and maintain open channels of communication with parents to address any concerns promptly.

Our teachers and staff members are trained in first aid and emergency response procedures. We have designated safe assembly points, well-defined evacuation plans, and comprehensive protocols for dealing with medical emergencies.

Heading this critical initiative is our Head of Administration, **Colonel C. Ravindra Reddy**.

About Colonel C. Ravindra Reddy

Colonel C. Ravindra Reddy brings an illustrious 31-year career in the Indian Army to Manchester Global School. With a strong academic foundation in Physics, holding degrees from the University of Mysore, he began a rewarding career in the armed forces.

Post-retirement, he established and led a Sainik School under the Telangana State Government in Karimnagar for four years, demonstrating his dedication to nurturing young minds. His extensive experience and dedication to education make him a valuable addition to Manchester Global School, where he now serves as the esteemed Head of Administration, overseeing critical aspects of our educational institution's operations.



Apollo Shine Clinic on Campus

Manchester Global School takes pride in ensuring the holistic well-being of our students through the integration of an advanced Apollo SHINE hospital of over 4,000 square feet directly on campus, with separate boys' and girls' sections.



This cutting-edge facility is designed in adherence to Apollo Hospitals Group protocols, offering a comprehensive approach to healthcare with the following key features:

Immediate care: Equipped with beds, medicines, first-aid kits, and oxygen cylinders, the health room will provide swift attention to minor illnesses and injuries.

Emergency support: In the event of emergencies, the facility will offer immediate medical assistance and ensure safe transportation via ambulance to the nearest hospital, ensuring student safety is never compromised.

Central Monitoring System: The health room is connected to a Central Monitoring System, overseen by experienced doctors and trained nurse officers, ensuring continuous medical supervision and adherence to Apollo Shine Code of Health Management.

Educational focus: Trained nursing officers will prioritise health education over instant medication, promoting a holistic approach to student well-being and fostering a culture of informed health choices.

Documentation and consultation: Every student/staff visit will be meticulously documented, cases will be ranked based on severity, and 24/7 telephonic consultations with SHINE doctors will be available, ensuring a proactive and informed healthcare approach.

Parental involvement: Parents will be kept informed based on the seriousness of health issues, ensuring transparency and trust in the care provided to their children.

Transport

At Manchester Global School, we are committed to providing a transportation system that gives parents peace of mind and ensures our students start and end their school day with safety, care, and convenience. We provide a safe, reliable, and convenient transportation system for our students and staff. Our fleet of modern, air-conditioned buses covers most areas of Hyderabad.

Our buses are equipped with advanced safety features, including GPS trackers for real-time monitoring and RFID attendance systems for accurate attendance tracking. To ensure a secure environment, a trained female attendee is present on every bus. Additionally, our system includes real-time updates for parents, enabling them to stay informed about their child's journey.

We also prioritize emergency preparedness, for our trained staff ready to handle any situation and our buses are maintained to the highest standards.



Our partnership provides our students with access to high-quality, nutritious meals that cater to their unique needs. Chartwells' expertise and commitment to nutrition make them an ideal partner for our school.

Food and Nutrition


At our school, we know that what kids eat can have a big impact on their energy, focus, and overall happiness.

We have partnered with Chartwells, a member of Compass Group PLC, a global leader in food services for the education sector, to provide innovative and nutritious dining solutions for our students. With a focus on developing healthy eating habits, Chartwells designs bespoke food solutions to support our students' overall well-being and academic success.



Manchester Global School is within an hour's reach from these prime locations

- Attapur
- Banjara Hills
- Begumpet
- Dilsukhnagar
- Financial District
- Gandipet
- Gachibowli
- Hayathnagar
- Hitech City
- Himayatnagar
- Ibrahimpatnam
- Jubilee Hills
- KPHB
- Kokapet
- Kollur
- Kondapur
- Kothaguda
- LB Nagar
- Maheshwaram
- Manikonda
- Mehdiapatnam
- Nanakramguda
- Narsingi
- Ramanthapur
- Ramoji Film City
- Santoshnagar
- Shamshabad
- Tarnaka
- Tellapur
- Tukkuguda
- Uppal
- Vanasthalipuram

 Hyderabad's Rajiv Gandhi International Airport is within a short 20-minute travel distance.





Discover a school with the
enterprise of Manchester and
the ethos of India.

www.manchester.global





**MANCHESTER
GLOBAL SCHOOL**

Education and Knowledge
with Wisdom



Survey No. 475, Rachuloor Road, Srisailam Highway, Hyderabad,
Telangana - 501359, India

+91 72079 75566 ✉ admissions@manchester.global



www.manchester.global